

**\*\*Yellow Highlights placed on our divisional and departmental ties.\*\* Start on Page 5**



# **THE SCHOOL BOARD OF BROWARD COUNTY, FLORIDA 2020-2021 ORGANIZATIONAL CHART**

Board Approved: 06/09/20



# THE SCHOOL BOARD OF BROWARD COUNTY, FLORIDA

## 2020-2021 ORGANIZATIONAL CHART

<b>School Board Appointed Committees &amp; Public Stakeholders.....</b>	<b>1</b>
<b>Superintendent of Schools.....</b>	<b>2</b>
<b>General Counsel.....</b>	<b>3</b>
<b>School Performance &amp; Accountability.....</b>	<b>4</b>
<b>Academics.....</b>	<b>5-7</b>
<b>Learning &amp; Development Support.....</b>	<b>5</b>
<b>Exceptional Student Learning Support.....</b>	<b>6</b>
<b>Student Learning.....</b>	<b>7</b>
<b>Student Support Initiatives &amp; Recovery.....</b>	<b>8</b>
<b>Auditor.....</b>	<b>9</b>
<b>Capital Programs.....</b>	<b>10</b>
<b>Financial Management.....</b>	<b>11</b>
<b>Human Resources &amp; Equity.....</b>	<b>12</b>
<b>Information &amp; Technology.....</b>	<b>13</b>
<b>Portfolio Services.....</b>	<b>14</b>
<b>Communications.....</b>	<b>15</b>
<b>Chief of Staff.....</b>	<b>16</b>
<b>Safety, Security &amp; Emergency Preparedness.....</b>	<b>17</b>
<b>Strategy &amp; Operations.....</b>	<b>18-20</b>
<b>Business Support Center, Grants Administration, Strategic Implementation &amp; Accountability.....</b>	<b>18</b>
<b>Food &amp; Nutrition Services, Procurement &amp; Warehousing Services, Supplier Diversity &amp; Outreach, Student Transportation &amp; Fleet Services.....</b>	<b>19</b>
<b>Physical Plant Operations.....</b>	<b>20</b>

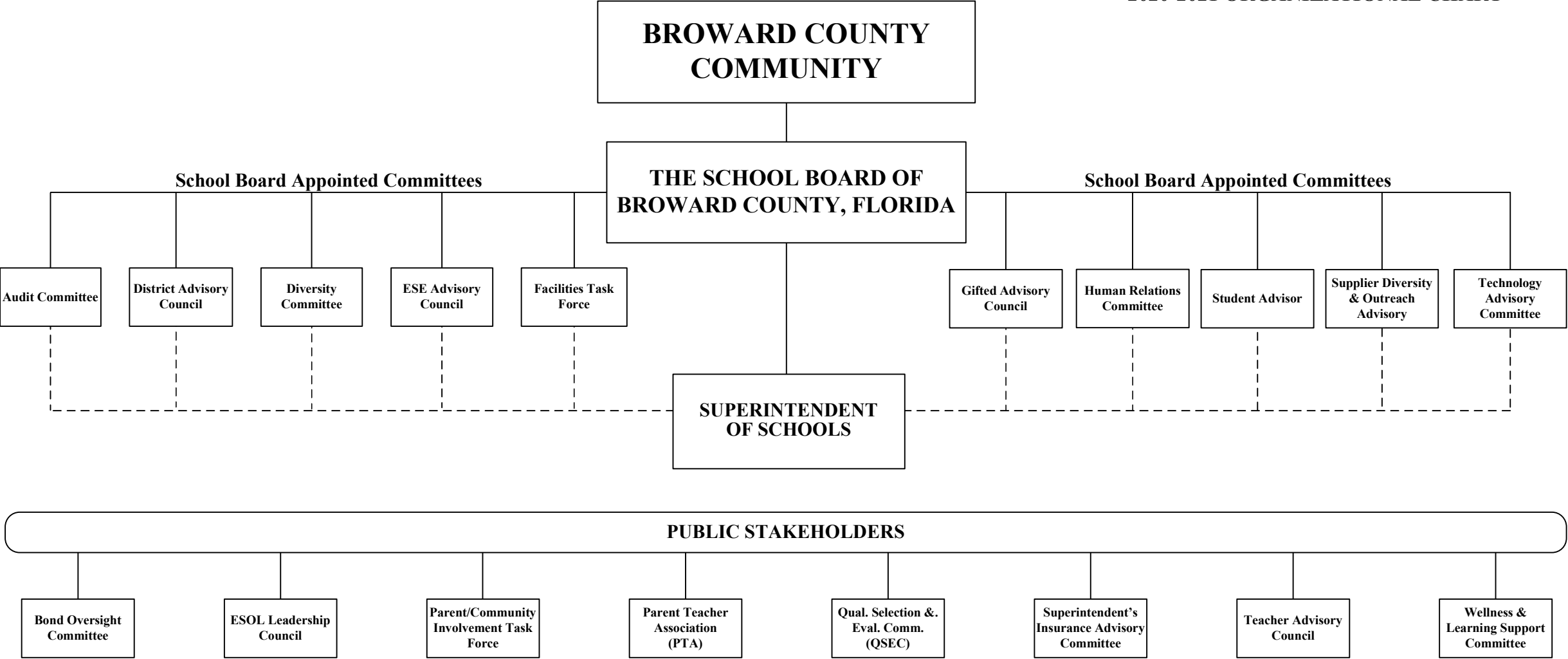
Funding from  
sources other than  
General Funds

Funding:  
**C** Capital   **FS** Food Service   **Gr** Grant  
**G** General   **R** Referendum

# SCHOOL BOARD APPOINTED COMMITTEES & PUBLIC STAKEHOLDERS



## THE SCHOOL BOARD OF BROWARD COUNTY, FL 2020-2021 ORGANIZATIONAL CHART



Funding from  
sources other than  
General Funds

Funding:

C

Capital

FS

Food Service

Gr

Grant

G

General

R

Referendum

**SUPERINTENDENT**

**BROWARD COUNTY  
COMMUNITY**



**THE SCHOOL BOARD OF BROWARD COUNTY, FL  
2020-2021 ORGANIZATIONAL CHART**

**THE SCHOOL BOARD OF  
BROWARD COUNTY, FLORIDA**

**GENERAL COUNSEL**

Page 3

**SUPERINTENDENT  
OF SCHOOLS**

**Collective Bargaining Team**

**CHIEF OF STAFF**

(S)

Page 16

**DIRECTOR  
Legislative Affairs**

(D)

**COORDINATOR  
Governmental Affairs**

(27)

**CHIEF  
SAFETY & SECURITY  
OFFICER**

(S)

Page 17

**CHIEF SCHOOL  
PERFORMANCE &  
ACCOUNTABILITY  
OFFICER**

Page 4

**CHIEF ACADEMIC  
OFFICER**

Pages 5-7

**CHIEF  
STUDENT SUPPORT  
INITIATIVES**

Page 8

**CHIEF AUDITOR**

Page 9

**EXECUTIVE  
DIRECTOR  
CAPITAL PROGRAMS**

Page 10

**CHIEF FINANCIAL  
OFFICER**

Page 11

**CHIEF HUMAN  
RESOURCES & EQUITY  
OFFICER**

Page 12

**CHIEF INFORMATION  
OFFICER**

Page 13

**CHIEF PORTFOLIO  
SERVICES OFFICER**

Page 14

**CHIEF  
COMMUNICATIONS  
OFFICER**

Page 15

**CHIEF STRATEGY &  
OPERATIONS OFFICER**

Pages 18-19

**Recovery Team**

Board Approved: 06/09/20

Funding from  
sources other than  
General Funds

Funding:

**C**

Capital

**FS**

Food Service

**Gr**

Grant

**G**

General

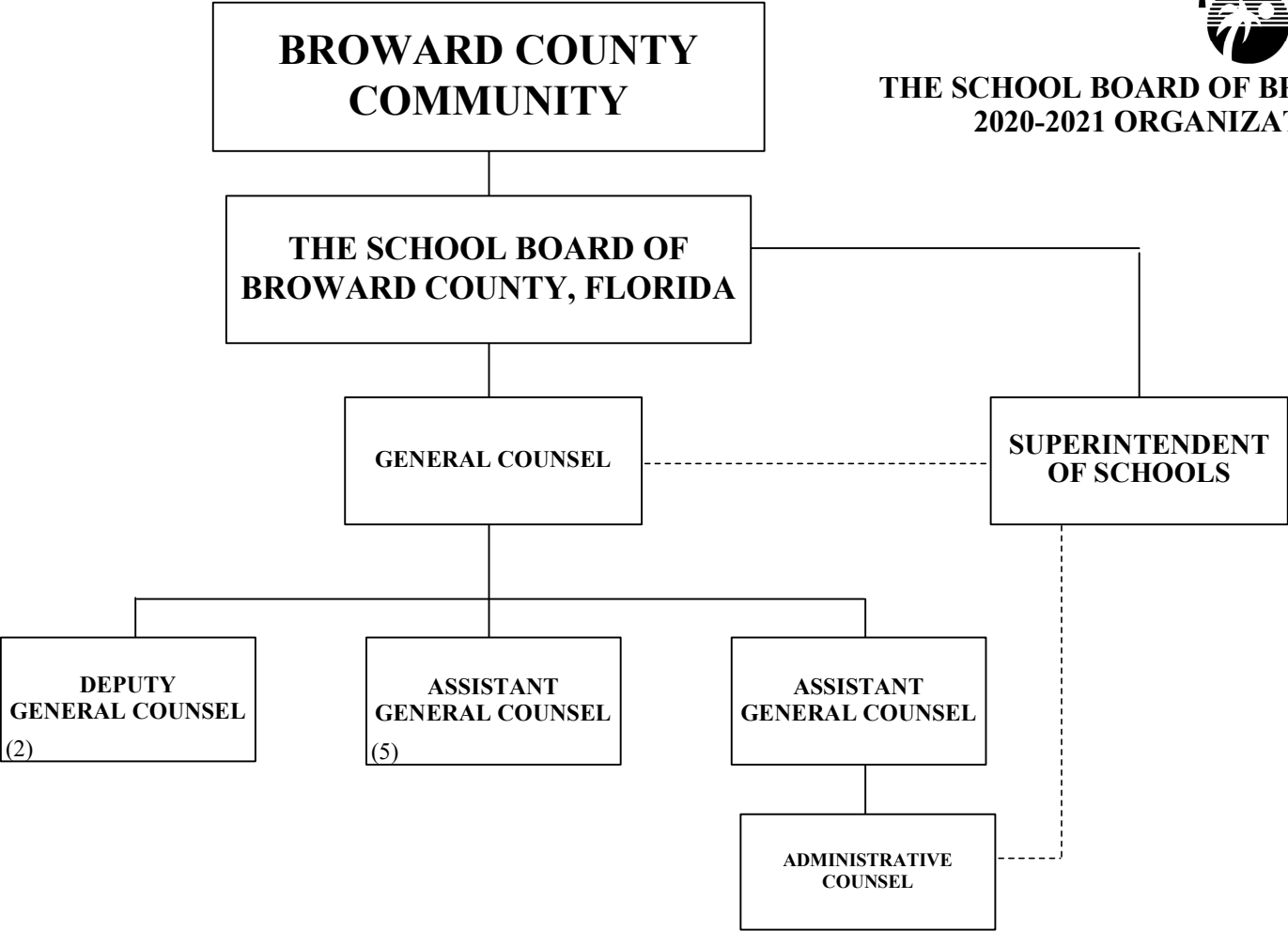
**R**

Referendum

**GENERAL COUNSEL**



**THE SCHOOL BOARD OF BROWARD COUNTY, FL  
2020-2021 ORGANIZATIONAL CHART**



Funding from  
sources other than  
General Funds

Funding:

C

Capital

FS

Food Service

Gr

Grant

G

General

R

Referendum

**SCHOOL PERFORMANCE & ACCOUNTABILITY  
OSPA**

**THE SCHOOL BOARD OF BROWARD COUNTY, FLORIDA**



**THE SCHOOL BOARD OF BROWARD COUNTY, FL  
2020-2021 ORGANIZATIONAL CHART**

**SUPERINTENDENT OF SCHOOLS**

**CHIEF  
SCHOOL PERFORMANCE  
& ACCOUNTABILITY  
OFFICER**

(S)

PAY BANDS 'S' & 'E'

**DIRECTOR  
Coaching & Induction**

(D)

**PRINCIPAL  
COACH**

(BPAA)

**SUPERVISOR  
Coaching & Induction**

(C)

(2)

**DIRECTOR  
SERVICE QUALITY**

(D)

**COORDINATOR  
School  
Improvement**

(C)

**ASSISTANT DIRECTOR  
ADMINISTRATION**

(C)

(4)

**DIRECTOR, SCHOOL  
PERFORMANCE &  
ACCOUNTABILITY**

(D)

(12)

**PRINCIPALS  
LEVELS/ZONES**

**DIRECTOR, SCHOOL  
PERFORMANCE &  
ACCOUNTABILITY**

(D)

(3)

**DIRECTOR  
Leadership Development**

(D)

**PRINCIPAL  
COACH**

(BPAA)

**SUPERVISOR  
Leadership Development**

(C)

(2)

**COORDINATOR  
Leadership Development**

(C)

**DIRECTOR  
Teacher Professional  
Learning & Growth**

(D)

**SUPERVISOR  
Teacher Professional  
Learning & Growth**

(C)

(2)

**COORDINATOR  
Teacher Support**

(27)

**DIRECTOR  
Professional Development  
Standards & Support**

(D)

**SUPERVISOR  
Professional Development  
Standards & Support**

(C)

G-77%  
Gr-23%

**RESEARCH SPECIALIST**

(27)

**PROCESS ANALYST  
Professional Development**

(25)

PAY BAND 'D'

PAY BANDS 'C' & 'B'

Funding from  
sources other than  
General Funds

Funding:

C

Capital

FS

Food Service

Gr

Grant

G

General

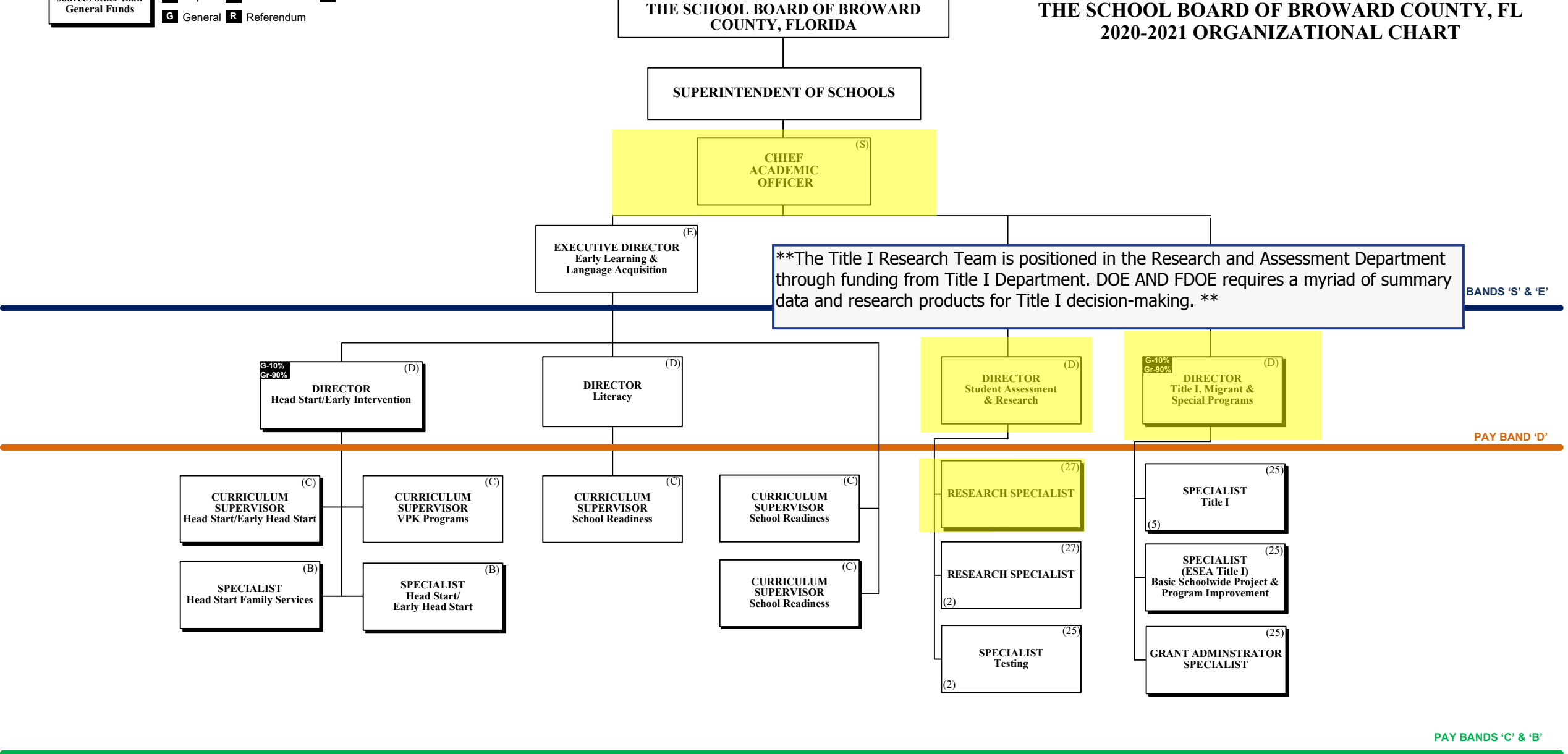
R

Referendum

ACADEMICS  
LEARNING & DEVELOPMENT SUPPORT



THE SCHOOL BOARD OF BROWARD COUNTY, FL  
2020-2021 ORGANIZATIONAL CHART



ACADEMICS  
EXCEPTIONAL STUDENT LEARNING SUPPORT



THE SCHOOL BOARD OF BROWARD COUNTY, FL  
2020-2021 ORGANIZATIONAL CHART

Funding from  
sources other than  
General Funds

Funding:  
**C** Capital **FS** Food Service **Gr** Grant  
**G** General **R** Referendum

THE SCHOOL BOARD OF BROWARD  
COUNTY, FLORIDA

SUPERINTENDENT OF SCHOOLS

CHIEF  
ACADEMIC  
OFFICER (S)

EXECUTIVE DIRECTOR  
Exceptional Student Learning  
Support (E)

PAY BANDS 'S' & 'E'

DIRECTOR (D)  
Exceptional Student Learning  
Support (Pre-K/Elementary)

DIRECTOR (D)  
Exceptional Student Learning  
Support (Secondary)

DIRECTOR (D)  
Exceptional Student Learning  
Support Services

PAY BAND 'D'

CURRICULUM  
SUPERVISOR (C)  
Autism Spectrum Disorder

CURRICULUM  
SUPERVISOR (C)  
Emotional/Behavioral  
Disabilities

CURRICULUM  
SUPERVISOR (C)  
DHH/Visually Impaired

CURRICULUM  
SUPERVISOR (C)  
Behavior

DISTRICT  
COORDINATOR (C)  
Due Process

DISTRICT  
COORDINATOR (C)  
Due Process

SUPERVISOR (C)  
FL Diagnostic & Learning  
Resource System

CURRICULUM  
SUPERVISOR (C)  
Intellectual Disabilities

SPECIALIST (B)  
Deaf and Hard of Hearing  
Charter Schools

CURRICULUM  
SUPERVISOR (C)  
Exceptional Student Learning  
Support

DISTRICT  
COORDINATOR (C)  
Psychological Services  
(3)

DISTRICT  
COORDINATOR (27)  
Medicaid

CURRICULUM  
SUPERVISOR (C)  
Preschool ESLSE

CURRICULUM  
SUPERVISOR (C)  
Specific Learning Disabilities

SPECIALIST (B)  
Visually Impaired  
Hospital Homebound/  
Private Schools

SUPERVISOR (C)  
ESLSE Transition Services

DISTRICT  
COORDINATOR (C)  
Speech-Language Physically  
Impaired

DISTRICT  
COORDINATOR (C)  
Severely Emotionally  
Disturbed Network

MANAGER (26)  
SSS/ESLSE Electronic  
Management System  
EZ IEP

PAY BANDS 'C' & 'B'



Funding from  
sources other than  
General Funds

Funding:

C

Capital

FS

Food Service

Gr

Grant

G

General

R

Referendum

ACADEMICS  
STUDENT LEARNING

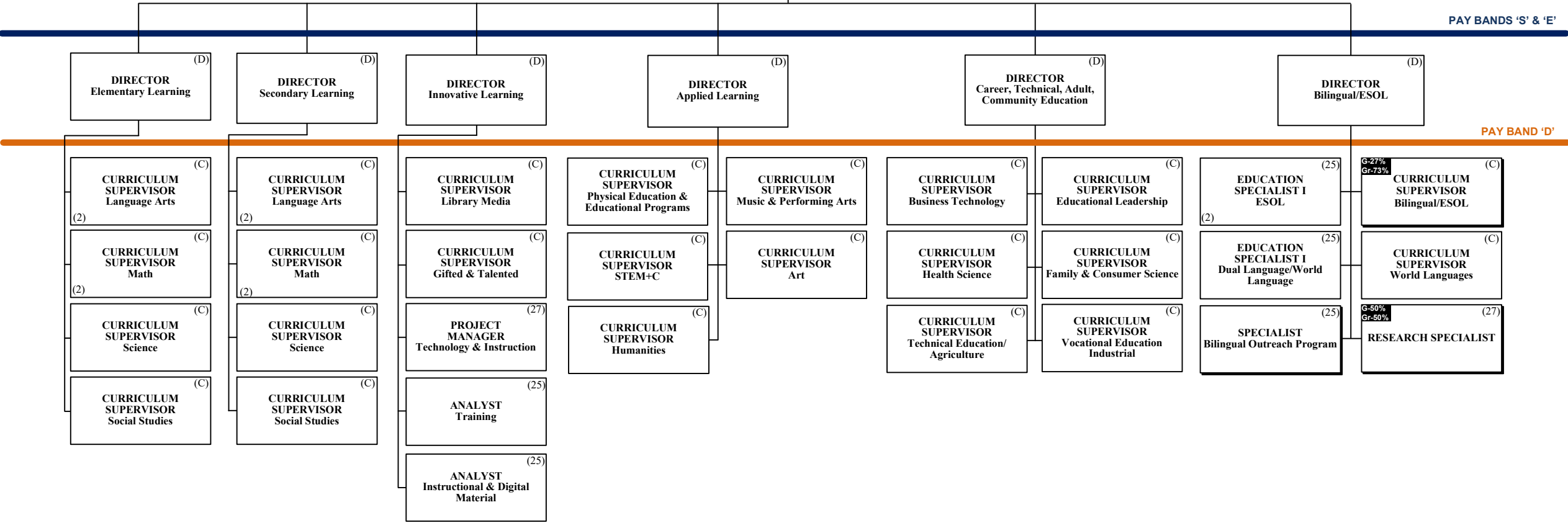
THE SCHOOL BOARD OF BROWARD  
COUNTY, FLORIDA

SUPERINTENDENT OF SCHOOLS

CHIEF  
ACADEMIC  
OFFICER



THE SCHOOL BOARD OF BROWARD COUNTY, FL  
2020-2021 ORGANIZATIONAL CHART



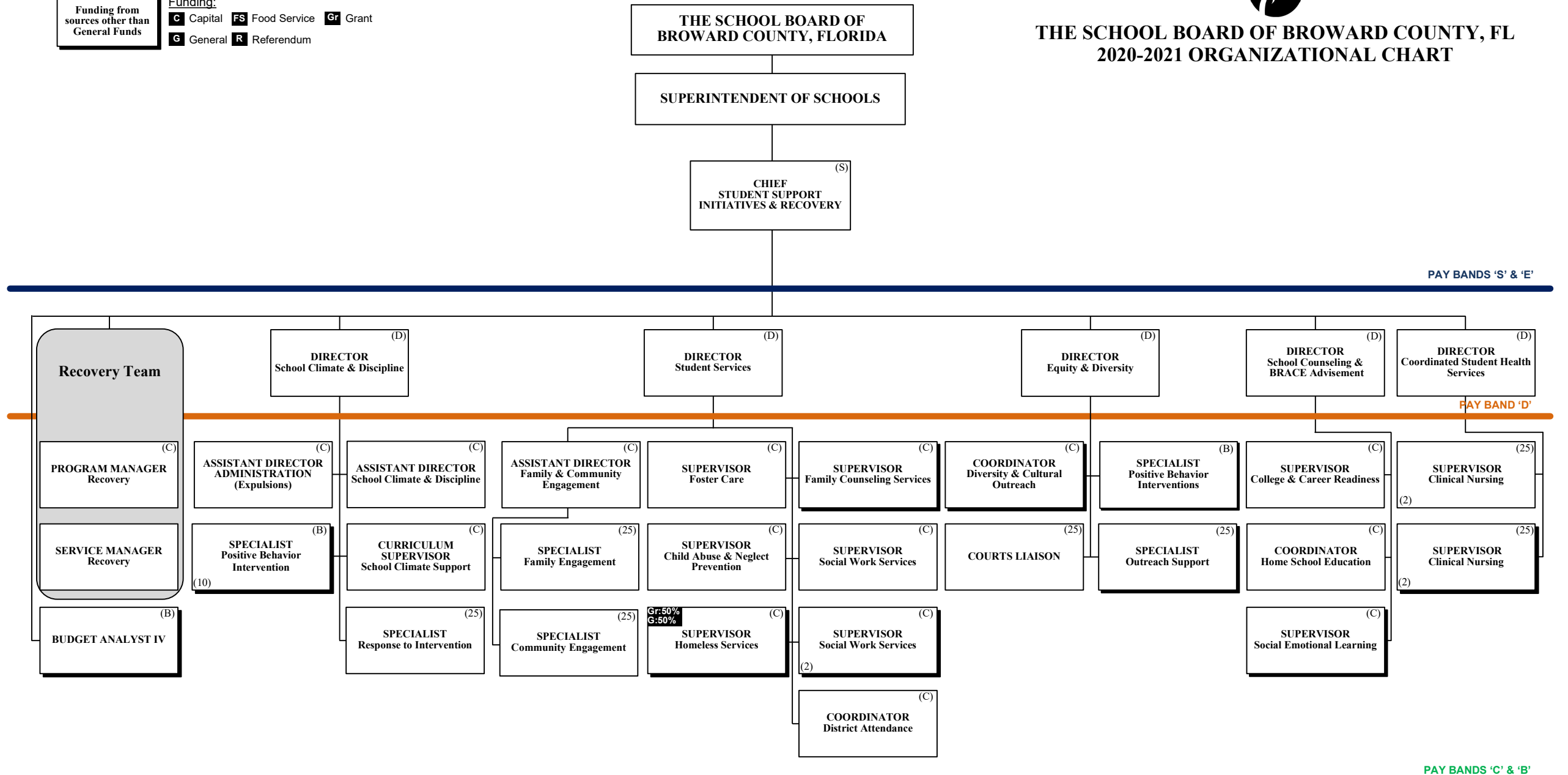


# STUDENT SUPPORT INITIATIVES & RECOVERY

## THE SCHOOL BOARD OF BROWARD COUNTY, FL 2020-2021 ORGANIZATIONAL CHART

Funding from sources other than General Funds

Funding: **C** Capital **FS** Food Service **Gr** Grant **G** General **R** Referendum



Funding from  
sources other than  
General Funds

Funding:

**C**

Capital

**FS**

Food Service

**Gr**

Grant

**G**

General

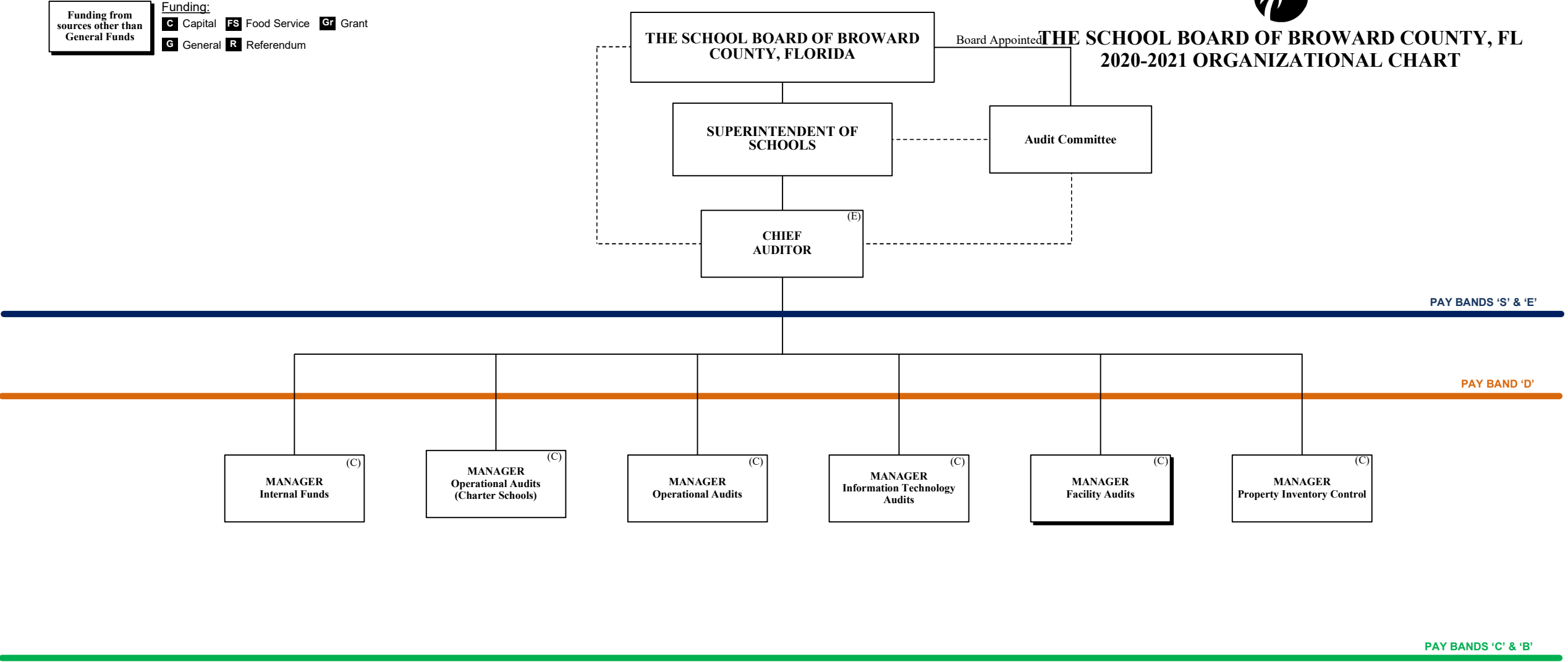
**R**

Referendum

AUDITOR



THE SCHOOL BOARD OF BROWARD COUNTY, FL  
2020-2021 ORGANIZATIONAL CHART



# CAPITAL PROGRAMS



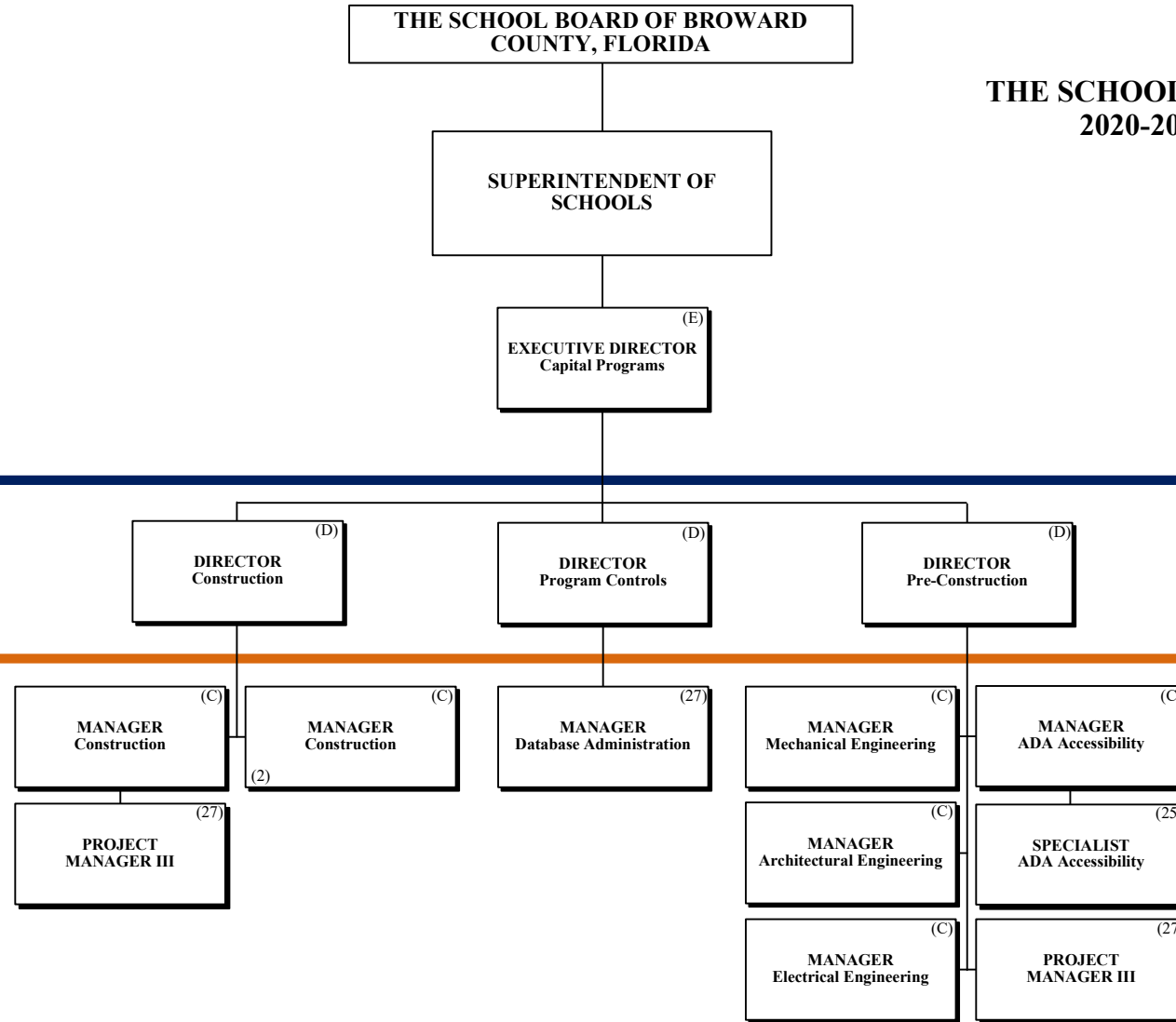
## THE SCHOOL BOARD OF BROWARD COUNTY, FL 2020-2021 ORGANIZATIONAL CHART

**Funding from sources other than General Funds**

**Funding:**

**C** Capital **FS** Food Service **Gr** Grant

**G** General **R** Referendum



ESMAB PAY BANDS 'C' & 'B'  
TSP PAY GRADES 25-28

Funding from  
sources other than  
General Funds

Funding:  
**C** Capital **FS** Food Service **Gr** Grant  
**G** General **R** Referendum

FINANCIAL MANAGEMENT

THE SCHOOL BOARD OF BROWARD  
COUNTY, FLORIDA

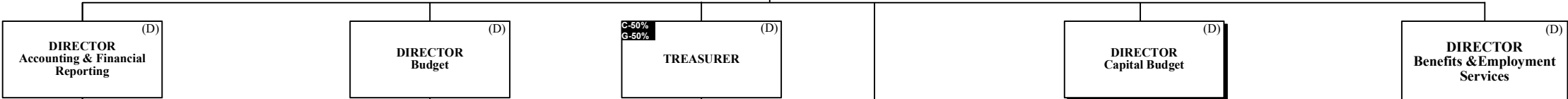
SUPERINTENDENT OF SCHOOLS

**C-20%**  
**G-80%**  
CHIEF  
FINANCIAL  
OFFICER (CFO) **(S)**

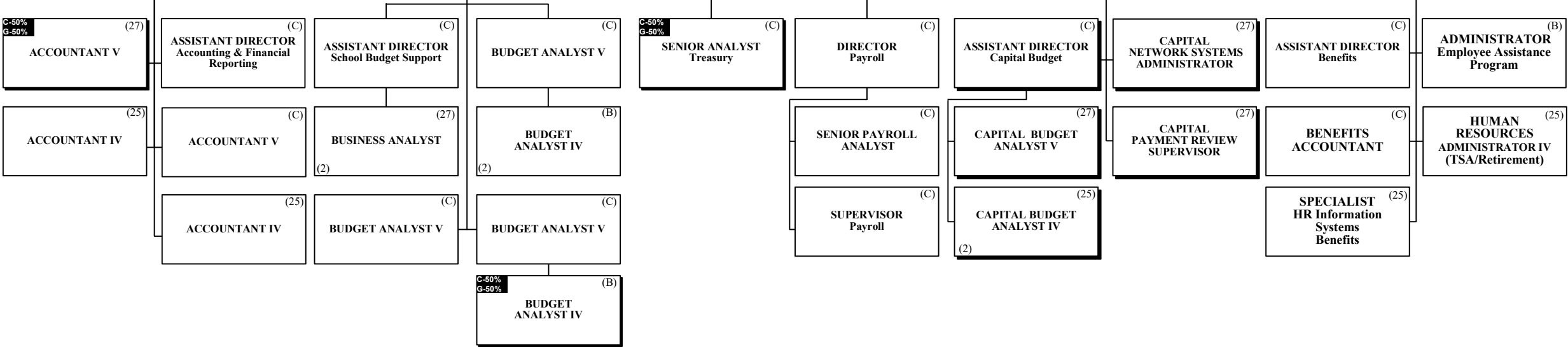


THE SCHOOL BOARD OF BROWARD COUNTY, FL  
2020-2021 ORGANIZATIONAL CHART

PAY BANDS 'S' & 'E'



PAY BAND 'D'



ESMAB PAY BANDS 'C' & 'B'  
TSP PAY GRADES 25-28

# HUMAN RESOURCES & EQUITY

THE SCHOOL BOARD OF BROWARD  
COUNTY, FLORIDA



THE SCHOOL BOARD OF BROWARD COUNTY, FL  
2020-2021 ORGANIZATIONAL CHART

**Funding from sources other than General Funds**

**Funding:**  
**C** Capital **FS** Food Service **Gr** Grant  
**G** General **R** Referendum

SUPERINTENDENT OF  
SCHOOLS

CHIEF  
HUMAN RESOURCES &  
EQUITY OFFICER

Collective Bargaining

PAY BANDS 'S' & 'E'

DIRECTOR  
Employee Evaluations

DIRECTOR  
Talent Acquisition &  
Operations  
(Instructional)

DIRECTOR  
Talent Acquisition &  
Operations  
(Non-Instructional)

DIRECTOR  
Employee & Labor  
Relations

DIRECTOR  
Compensation &  
HR Support Services

DIRECTOR  
EEO/ADA Compliance

PAY BAND 'D'

COORDINATOR  
Evaluation

(3)

RESEARCH  
SPECIALIST

(27)

MANAGER  
Certification/  
Incentives

(C)

SPECIALIST  
HR Information Systems

(25)

COORDINATOR  
Non-Instructional  
Development

(27)

MANAGER  
Employee & Labor  
Relations

(C)

HR SPECIALIST

(2)

MANAGER  
Employee & Labor  
Relations

(C)

SPECIALIST  
Employee & Labor  
Relations

(2)

MANAGER  
HR Support Services

(C)

ESMAB PAY BANDS 'C' & 'B'  
TSP/PBA PAY GRADES 25-28

Funding from  
sources other than  
General Funds

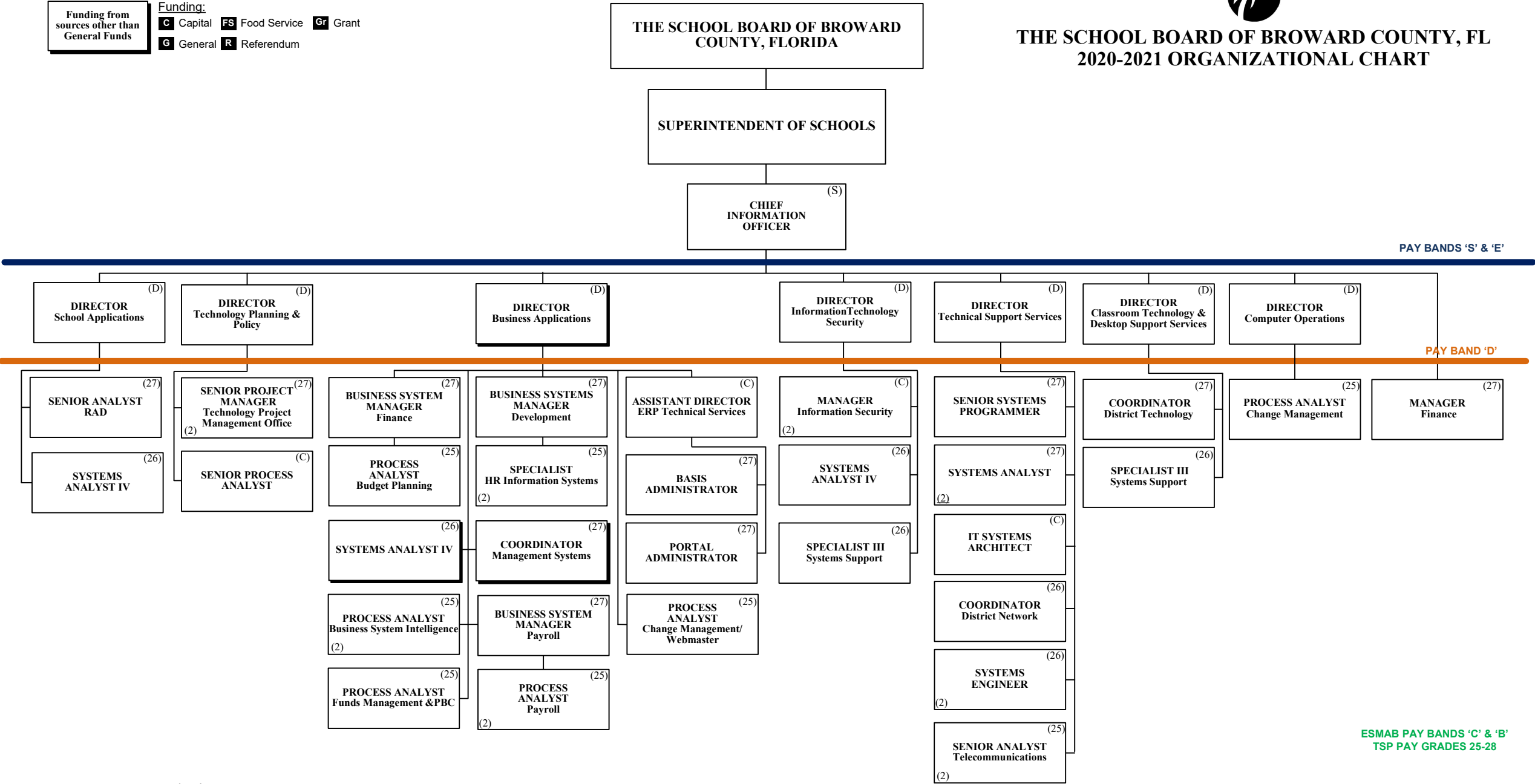
Funding:

**C** Capital **FS** Food Service **Gr** Grant  
**G** General **R** Referendum

INFORMATION & TECHNOLOGY



THE SCHOOL BOARD OF BROWARD COUNTY, FL  
2020-2021 ORGANIZATIONAL CHART



Funding from  
sources other than  
General Funds

Funding:  
**C** Capital **FS** Food Service **Gr** Grant  
**G** General **R** Referendum

PORTFOLIO SERVICES

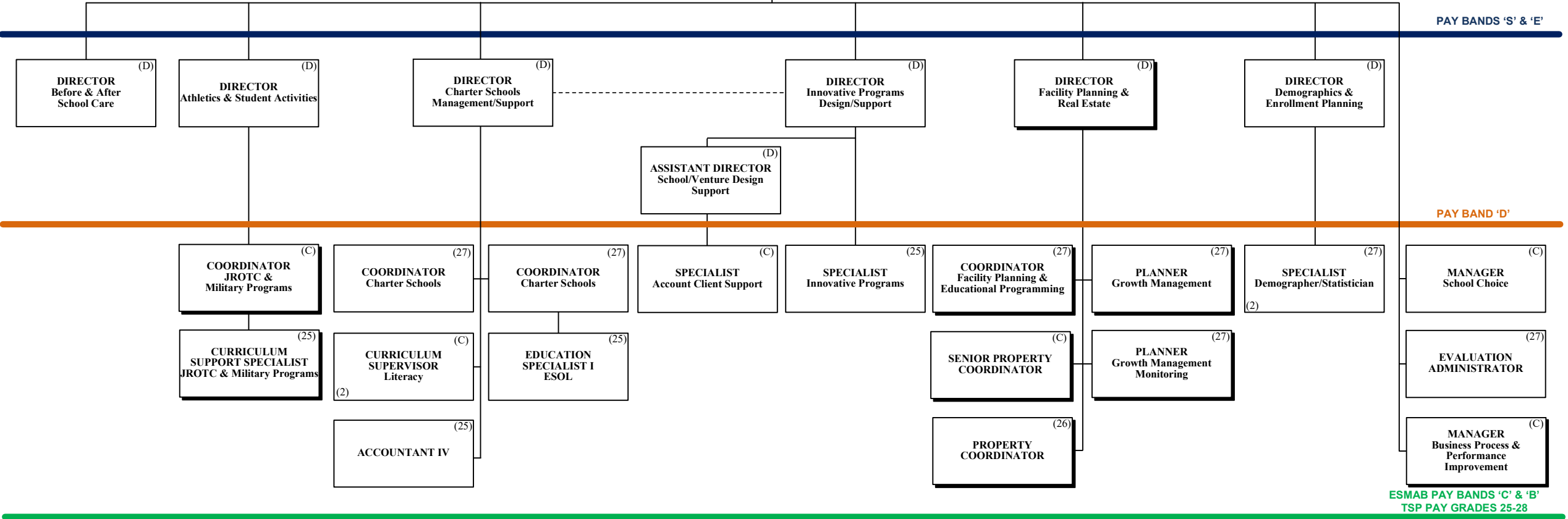
THE SCHOOL BOARD OF BROWARD  
COUNTY, FLORIDA

SUPERINTENDENT OF SCHOOLS

CHIEF  
PORTFOLIO SERVICES  
OFFICER (E)



THE SCHOOL BOARD OF BROWARD COUNTY, FL  
2020-2021 ORGANIZATIONAL CHART



ESMAB PAY BANDS 'C' & 'B'  
TSP PAY GRADES 25-28



Funding from  
sources other than  
General Funds

Funding:

**C**

Capital

**FS**

Food Service

**Gr**

Grant

**G**

General

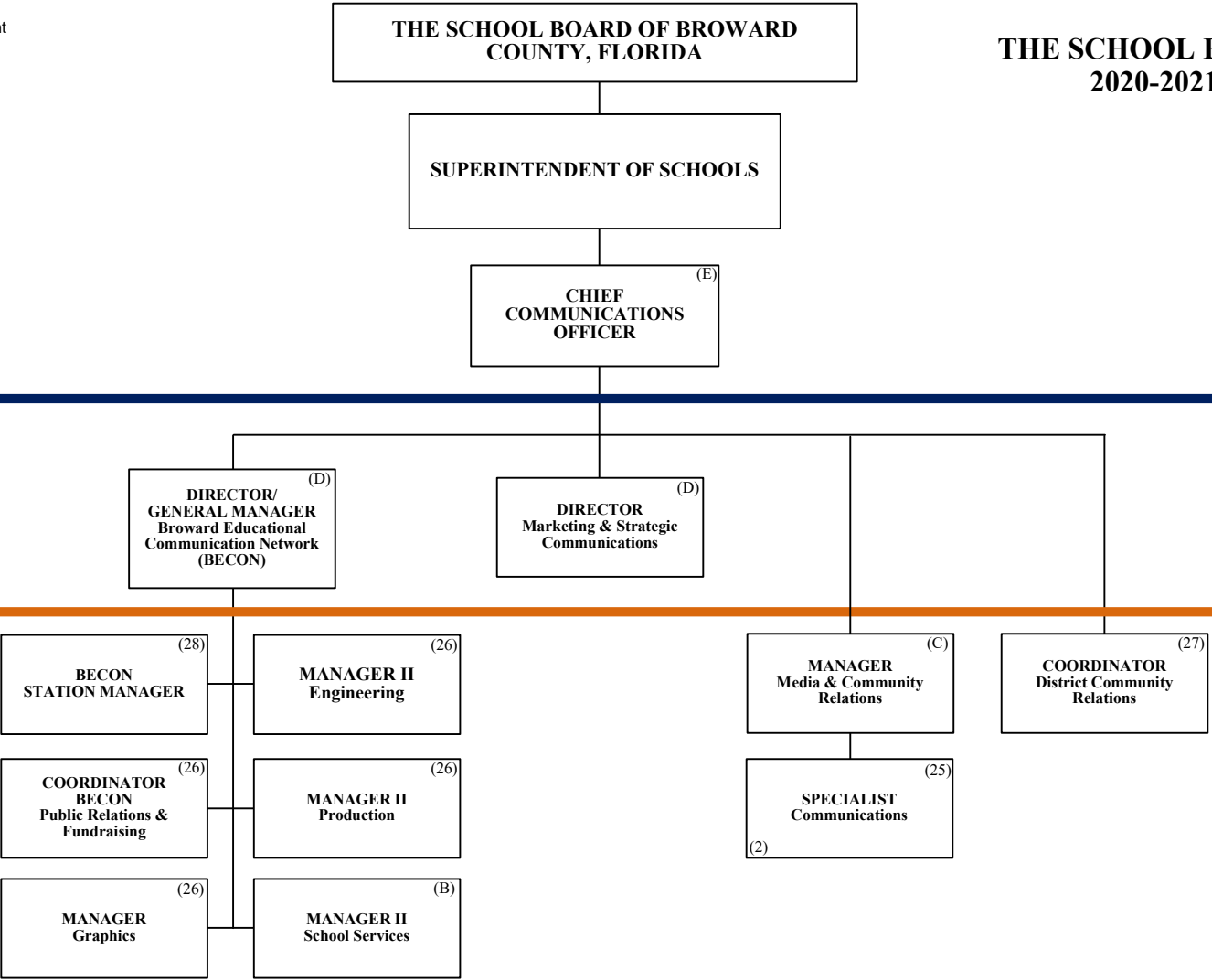
**R**

Referendum

# COMMUNICATIONS



## THE SCHOOL BOARD OF BROWARD COUNTY, FL 2020-2021 ORGANIZATIONAL CHART



ESMAB PAY BANDS 'C' & 'B'  
TSP PAY GRADES 25-28

Funding from  
sources other than  
General Funds

Funding:

C

Capital

FS

Food Service

Gr

Grant

G

General

R

Referendum

CHIEF OF STAFF

THE SCHOOL BOARD OF BROWARD  
COUNTY, FLORIDA

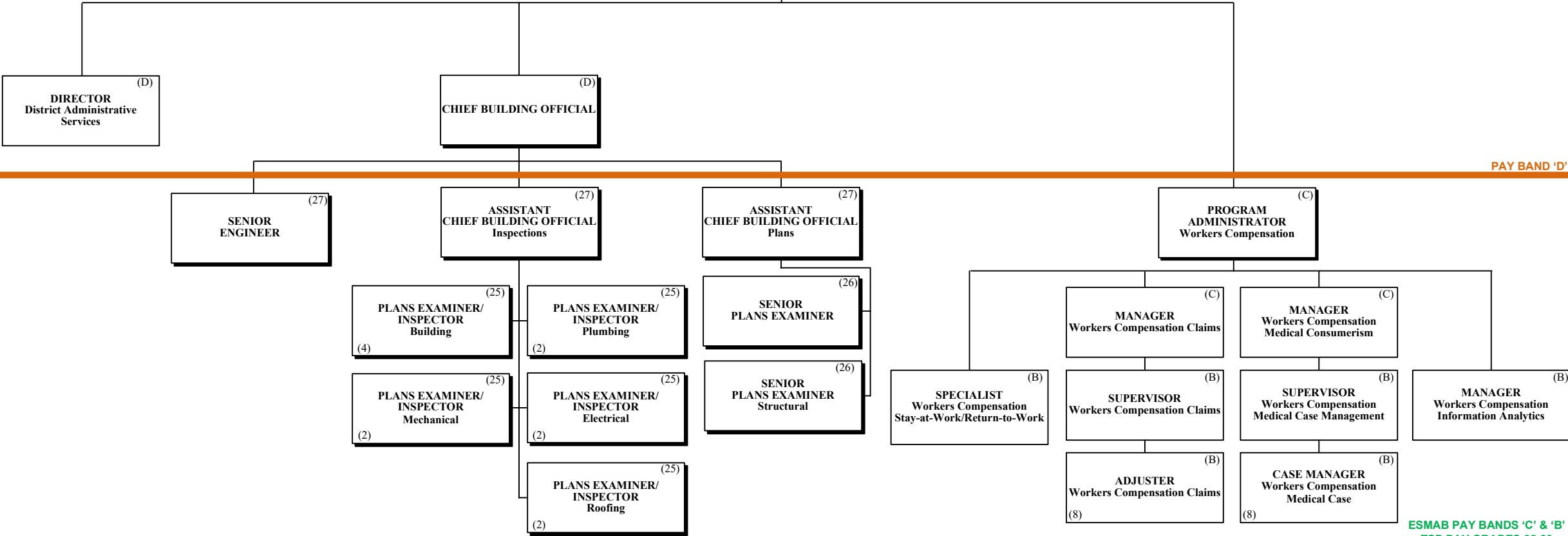
SUPERINTENDENT OF SCHOOLS

CHIEF  
OF STAFF



THE SCHOOL BOARD OF BROWARD COUNTY, FL  
2020-2021 ORGANIZATIONAL CHART

PAY BANDS 'S' & 'E'



PAY BAND 'D'

ESMAB PAY BANDS 'C' & 'B'  
TSP PAY GRADES 25-28

Funding from  
sources other than  
General Funds

Funding:  
**C** Capital **FS** Food Service **Gr** Grant  
**G** General **R** Referendum

**SAFETY, SECURITY  
& EMERGENCY PREPAREDNESS**

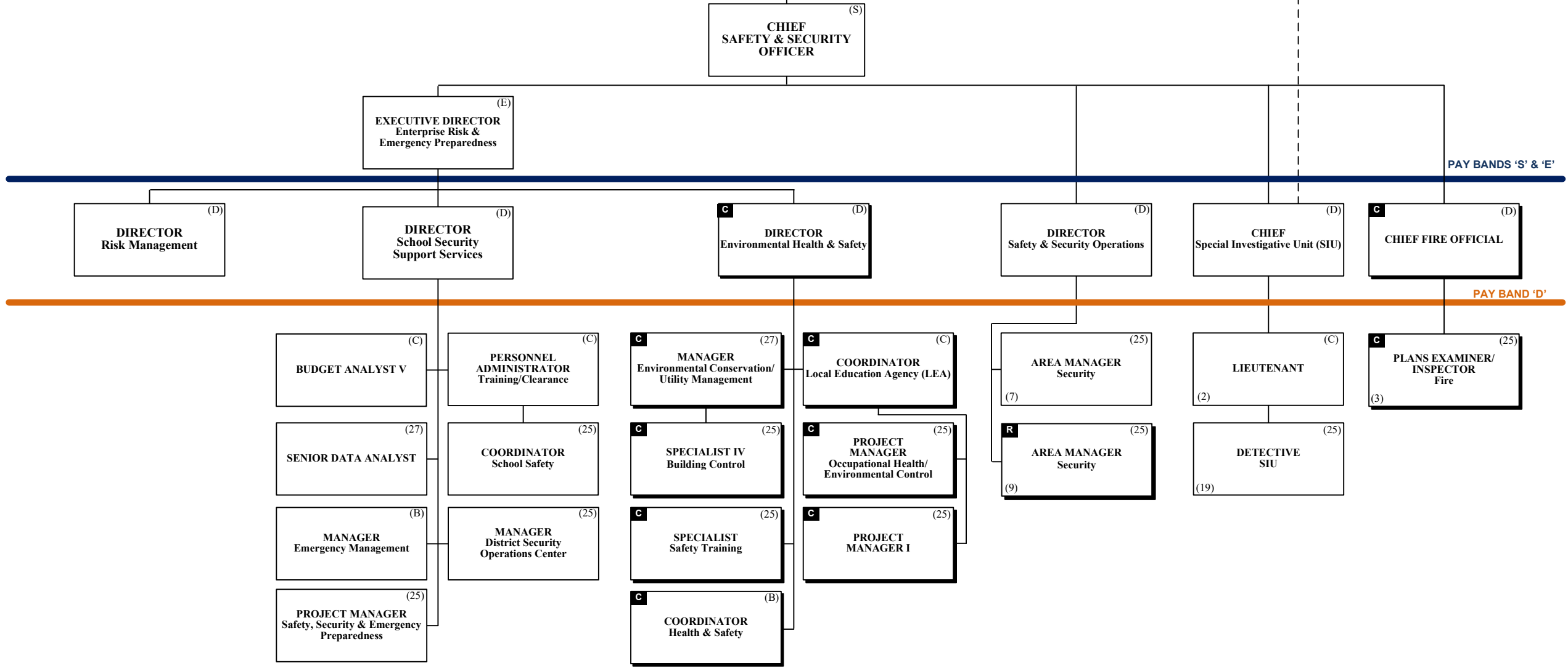
**THE SCHOOL BOARD OF BROWARD  
COUNTY, FLORIDA**

**SUPERINTENDENT OF SCHOOLS**

**CHIEF  
SAFETY & SECURITY  
OFFICER**



**THE SCHOOL BOARD OF BROWARD COUNTY, FL  
2020-2021 ORGANIZATIONAL CHART**



ESMAB PAY BANDS 'C' & 'B'  
TSP PAY GRADES 25-28

Funding from  
sources other than  
General Funds

Funding:

C

Capital

FS

Food Service

Gr

Grant

G

General

R

Referendum

# STRATEGY & OPERATIONS

THE SCHOOL BOARD OF BROWARD  
COUNTY, FLORIDA

SUPERINTENDENT OF SCHOOLS

CHIEF  
STRATEGY &  
OPERATIONS  
OFFICER

(S)

EXECUTIVE DIRECTOR  
Strategic Initiative  
Management

(E)

PAY BANDS 'S' & 'E'

DIRECTOR  
Grants Administration

(D)

DIRECTOR  
Business Support Center

(D)

DIRECTOR  
Performance Management

(D)

DIRECTOR  
Program Evaluation

(D)

PAY BAND 'D'

SENIOR MANAGER  
Grant Programs

(C)

MANAGER  
Grant Programs Oversight

(26)

(2)

GRANTS  
ADMINISTRATOR  
Accountability & Reporting

(25)

MANAGER  
Budget

(27)

BUSINESS ANALYST

(27)

(2)

SUPERVISOR I  
Printing Services

(26)

COORDINATOR  
Performance Management

(C)

COORDINATOR  
Strategic Management

(C)

EVALUATION  
ADMINISTRATOR

(27)

ESMAB PAY BANDS 'C' & 'B'  
TSP PAY GRADES 25-28

Funding from sources other than General Funds

Funding:

C Capital FS Food Service Gr Grant

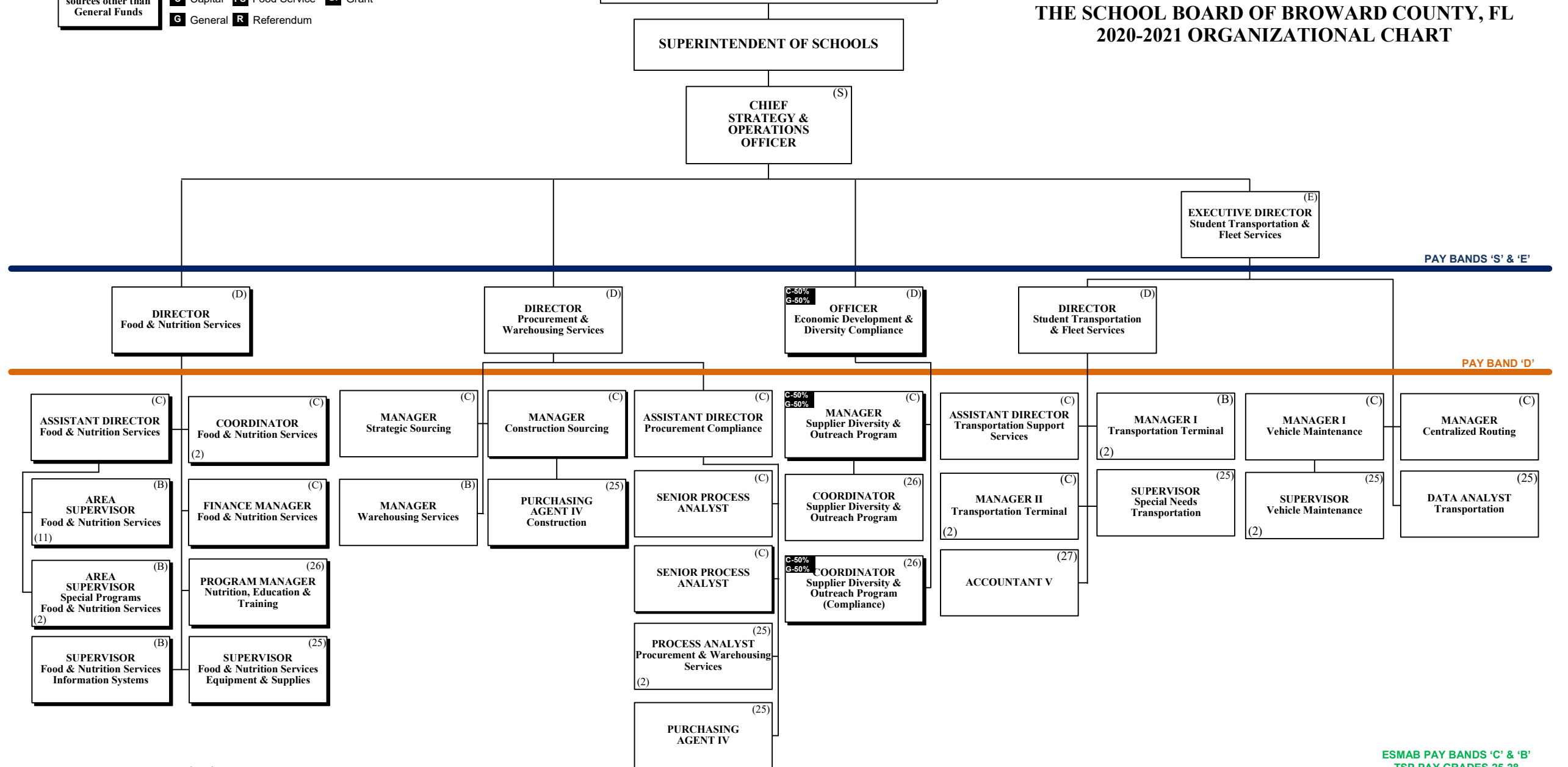
G General R Referendum



STRATEGY & OPERATIONS

THE SCHOOL BOARD OF BROWARD COUNTY, FLORIDA

THE SCHOOL BOARD OF BROWARD COUNTY, FL  
2020-2021 ORGANIZATIONAL CHART



Funding from  
sources other than  
General Funds

Funding:

**C** Capital **FS** Food Service **Gr** Grant  
**G** General **R** Referendum



THE SCHOOL BOARD OF BROWARD COUNTY, FL  
2020-2021 ORGANIZATIONAL CHART

